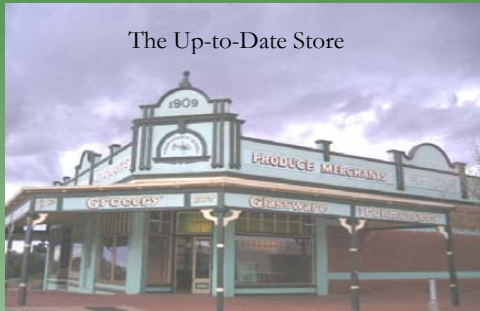


Coolamon's Heritage Main Street



The Up-to-Date Store



RSL Museum

Happy Group of Heritage 'Tourers'



Coolamon Heritage Tours

Experience the best in
country hospitality

- **Fun! Fantastic and Hassle Free!**
- **Experienced guides at all venues.**
- **Delicious morning & afternoon teas and lunches at the historic railway.**
- **Reasonable rates for full day, half day or casual stop.**



Tours by arrangement
Contact: Judy Quilter
02 6927 2154

**Coolamon Heritage Tours
& Railway Station**

Coolamon, NSW



Coolamon Railway Station
Wade Street,
COOLAMON NSW 2701

.....*In the Beginning*

The decision to build railways was crucial to development, to trade and to the formation of Coolamon. A good deal of political pressuring was involved in deciding the route of the south-west line should it go from Wagga to Narrandera or from Junee west?



Eventually the Junee route was chosen and engineering considerations seem to have been crucial to the decision.

John Whitton, Engineer-in-Chief NSW Railways, drew plans for the extension of the rail line from June to Narrandera. Fishburn and Morton constructed the line with the assistance of horse and bullock teams. The first train passed through Coolamon in 1881.



The railway was to become the lifeblood of Coolamon and district, encouraging not only closer settlement but forging trade, mail and passenger links with Sydney and beyond.

The silos were built in 1922 catering for the increased demand for grain storage.

.....*More about us*

The Coolamon Railway Station is the home of the Coolamon Heritage and Advancement Society (CHAS). With the support of Coolamon Shire Council, CHAS not only maintains and promotes this historic building, but also assists with many other community projects and initiatives.



The Station is also the home-base for the entertaining and popular Coolamon Heritage Tours which cater for visitors from the local region, other states and overseas.



Be assured that a warm welcome, delicious home baking and plenty of laughter awaits you at the Coolamon Railway Station.



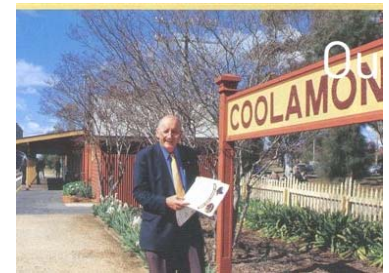
.....*And today*



Today it is hard to imagine the Coolamon Railway Station stripped of all amenities and awaiting the same fate as other small stations along the south west line --- the bulldozer.

Due to the passionate enthusiasm of the Coolamon community through the Coolamon Heritage & Advancement Society, the Regional Arts Council and the Coolamon Shire Council a reprieve for the station came just in time.

The railway station and precincts are now in constant use throughout the year with train and coach tours and many community functions.



Rail enthusiast the Hon. Tim Fischer opened the most recent refurbishments (courtesy of State Rail) in 2003.